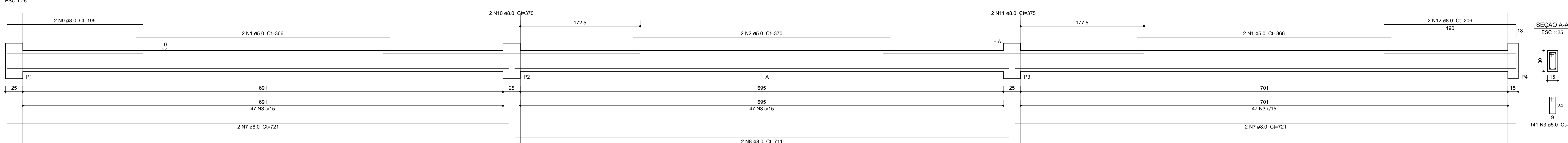
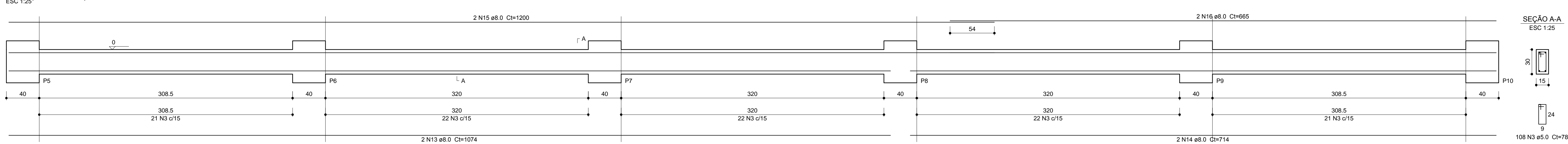


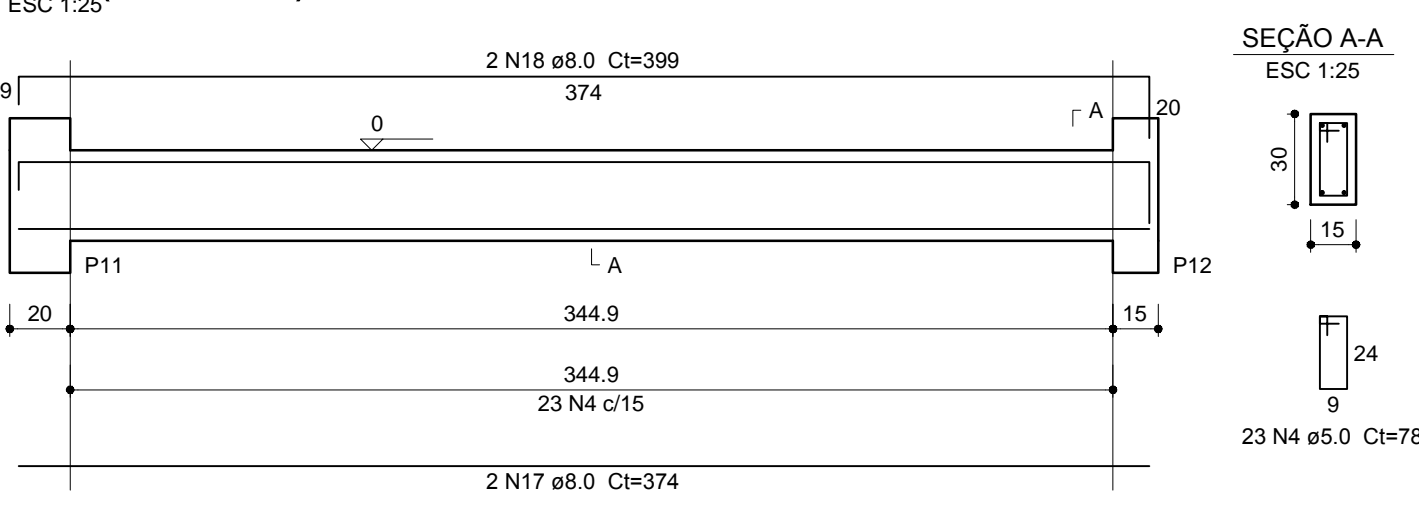
V1 (15 x 30)



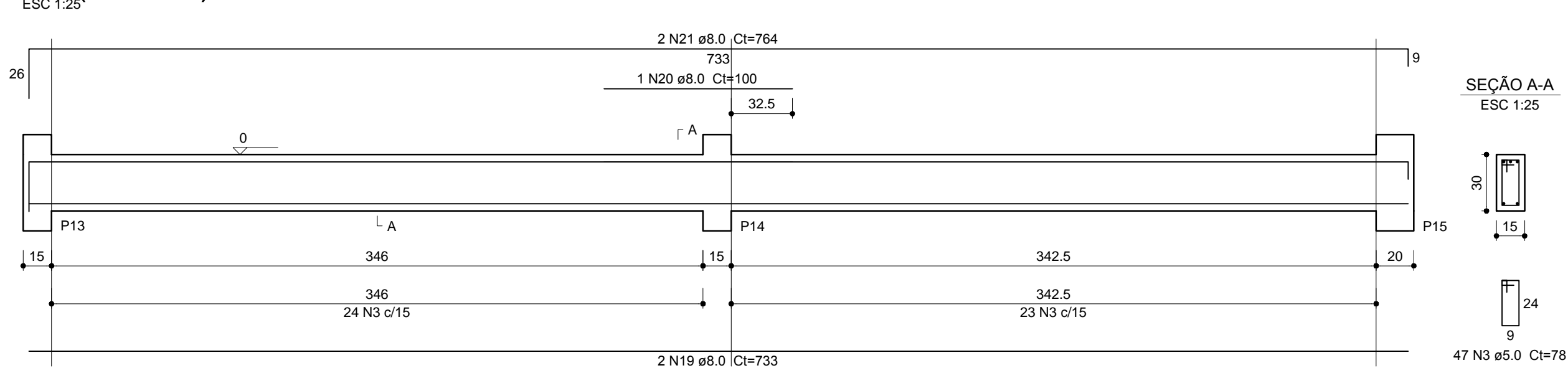
V2 (15 x 30)



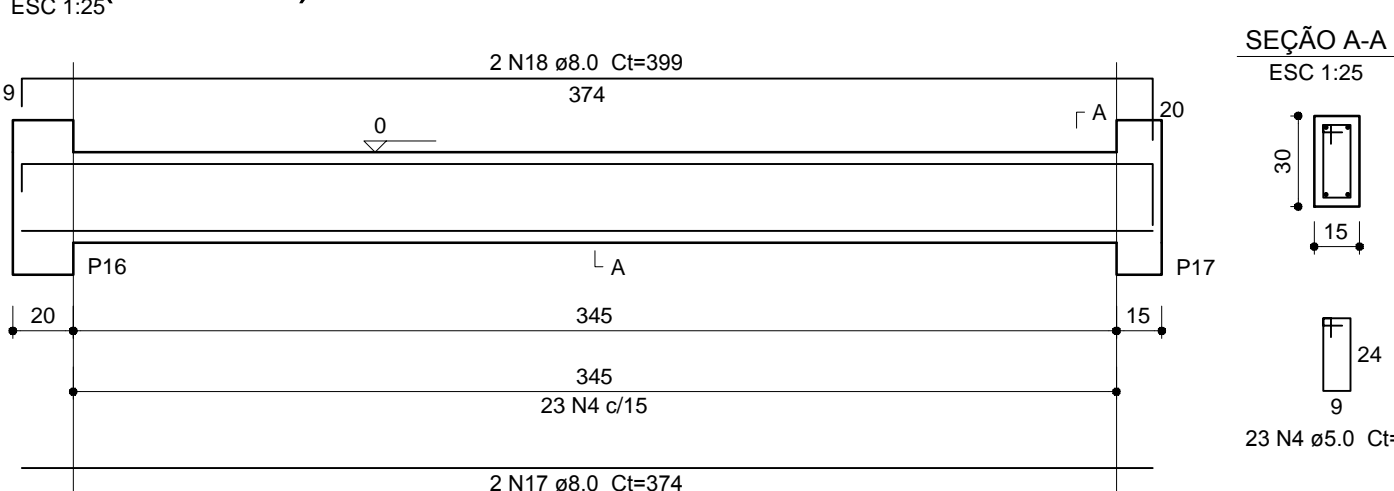
V3 (15 x 30)



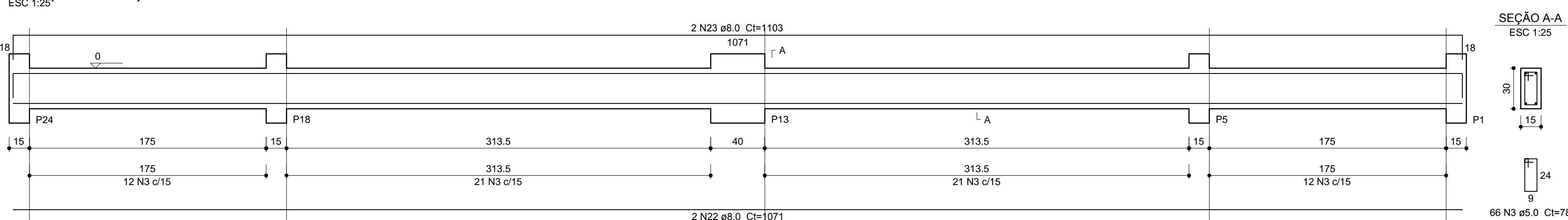
V4 (15 x 30)



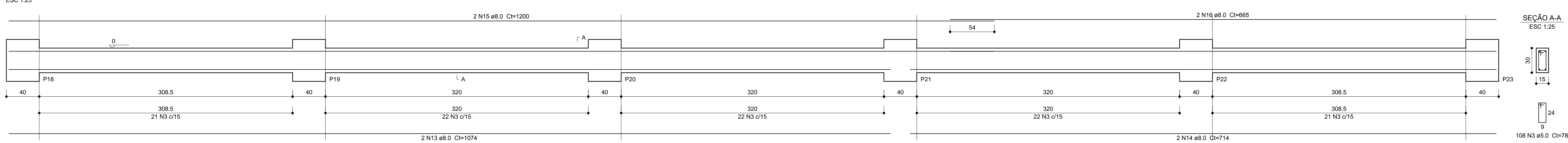
V5 (15 x 30)



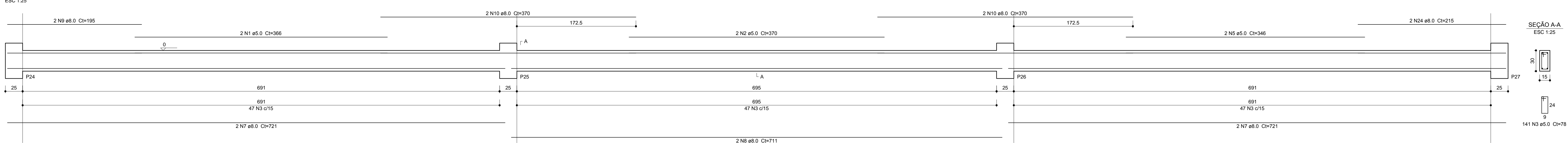
V8 (15 x 30)



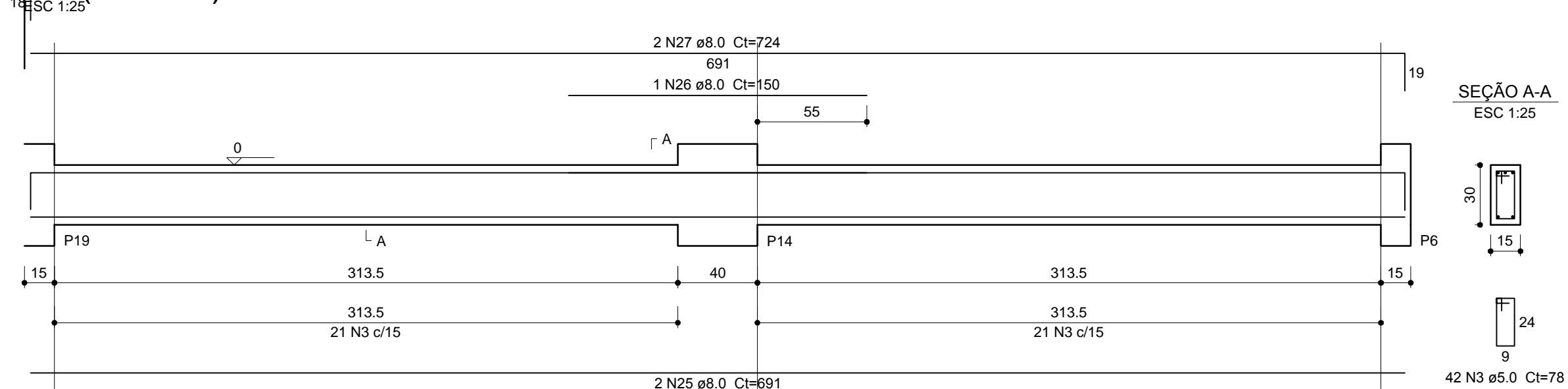
V6 (15 x 30)



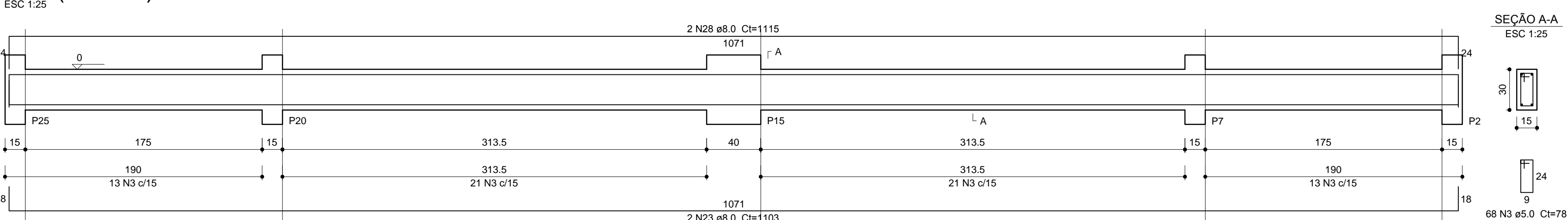
V7 (15 x 30)



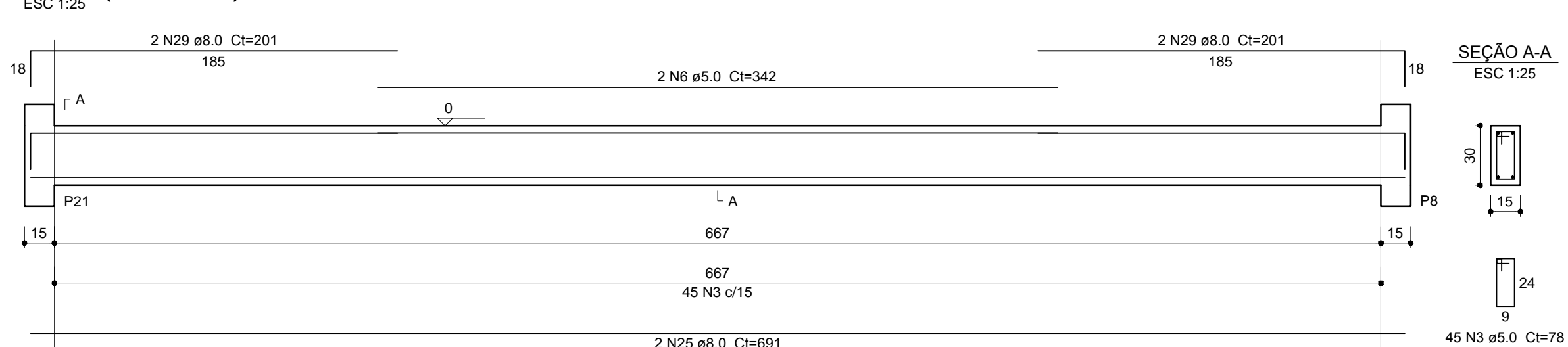
V9 (15 x 30)



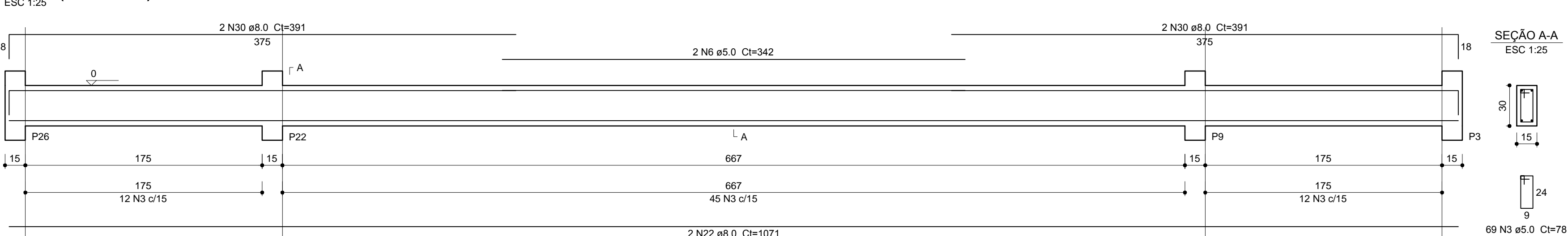
V10 (15 x 30)



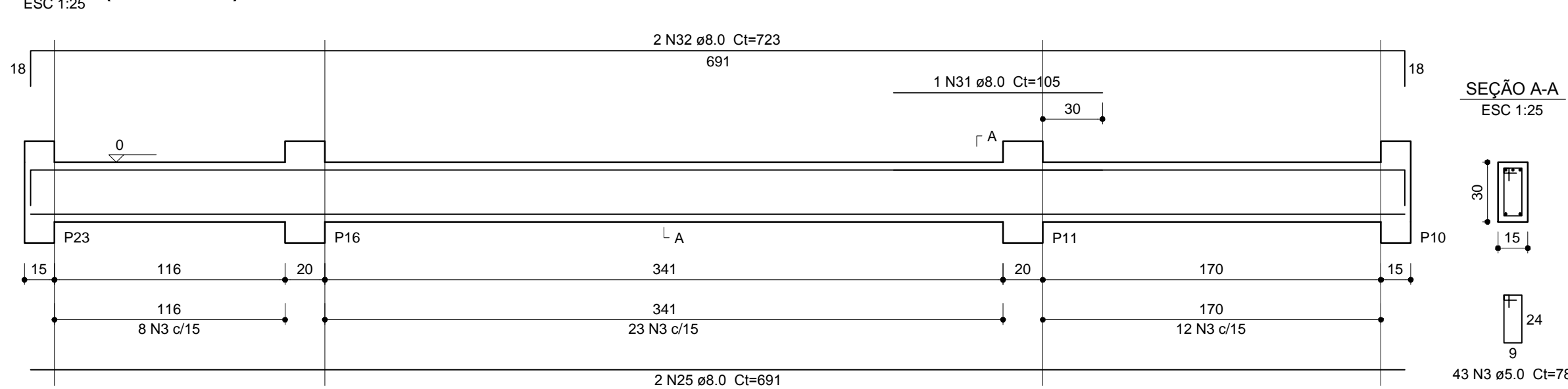
V11 (15 x 30)



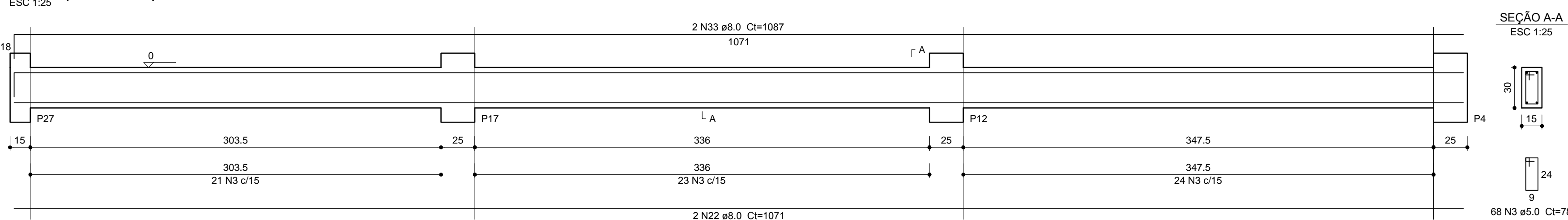
V12 (15 x 30)



V13 (15 x 30)



V14 (15 x 30)



Relação do aço

AÇO	N	DIAM (mm)	QUANT	C.UNIT (cm)	C.TOTAL (cm)
CA60	1	5.0	6	966	2196
	2	5.0	4	370	1480
	3	5.0	946	75	73788
	4	5.0	46	78	3772
CASO	5	8.0	2	346	692
	6	5.0	4	342	1368
	7	8.0	8	721	5768
	8	8.0	4	711	2844
	9	8.0	4	195	780
	10	8.0	6	370	2220
	11	8.0	2	375	750
	12	8.0	2	206	412
	13	8.0	4	1074	4296
	14	8.0	4	714	2856
	15	8.0	4	1200	4800
	16	8.0	4	650	2600
	17	8.0	4	374	1496
	18	8.0	4	389	1556
	19	8.0	2	733	1466
	20	8.0	1	100	100
	21	8.0	2	764	1528
	22	8.0	6	1071	6426
	23	8.0	4	1103	4412
	24	8.0	2	215	430
	25	8.0	6	691	4146
	26	8.0	1	150	150
	27	8.0	2	724	1448
	28	8.0	2	1115	2230
	29	8.0	4	201	804
	30	8.0	4	391	1564
	31	8.0	1	105	105
	32	8.0	2	723	1446
	33	8.0	2	1087	2174

Resumo do aço

AÇO	DIAM (mm)	C.TOTAL (m)	PESO + 10 % (kg)
CASO	8.0	588.1	255.7
CA60	5.0	833	141.2
PESO TOTAL (kg)			
CASO	255.7		
CA60	141.2		

Volume de concreto (C-30) = 7.19 m³
Área de forma = 119.26 m²